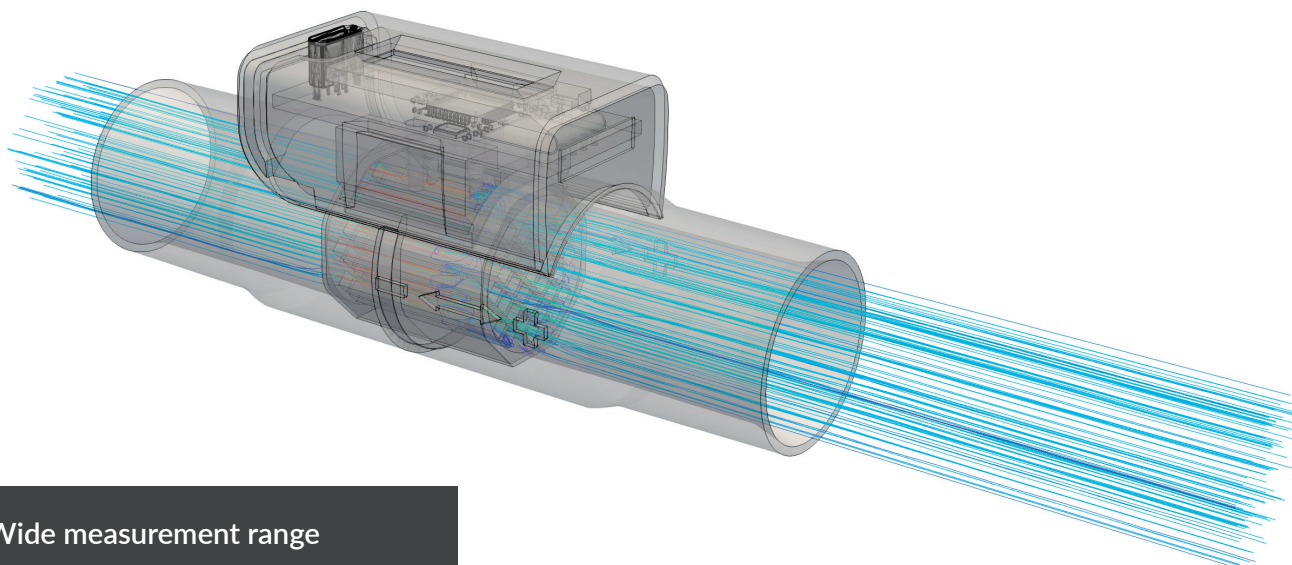
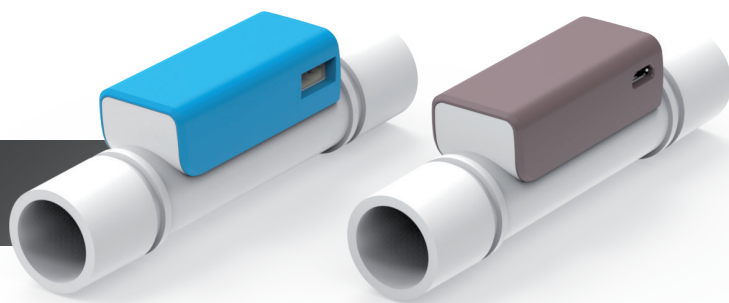


Custom flow meters

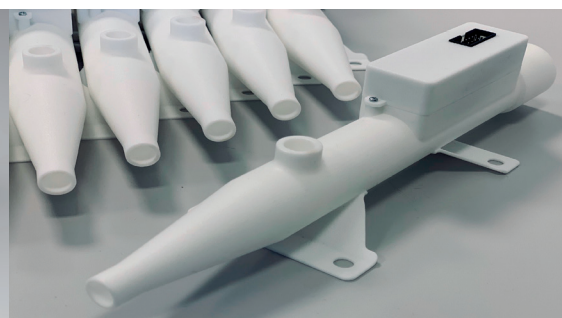
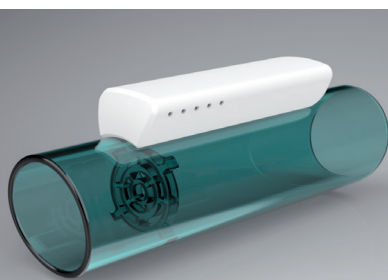
Analog and digital flow meters based on differential pressure measurement from 3D printed components

Technological equipment has a shortened lifecycle nowadays, and adaptation of new developments is of paramount importance for the survival and rapid market response of companies.

Our small scale adaptive manufacturing technologies and efficient calibration procedures allow us to satisfy individual customer needs even in small series. The measurement conditions and communication protocol of our sensors can flexibly be configured, so they can easily be integrated into the interface of existing systems.



- Wide measurement range
- Low pressure drop
- Various connection types
- Custom communication protocol
- Individually calibrated
- Different colour options





Flow measuring devices

SFS 500 FLOW METER

The sfs500 bidirectional flow meter features an extremely broad operation range, high accuracy, low flow loss and fast response time.

Nowadays the lifecycle of technical equipment has been shortened, and rapid adaptation of new technologies is of paramount importance for efficient business operation and rapid market response.

Thanks to our adaptive manufacturing technologies and efficient calibration procedures we are able to satisfy custom needs even in small series. The measurement principle and communication protocol of our sensors can be flexibly configured, so they can easily be integrated into the interface of already existing systems.

The sfs500 is suitable for measuring volumetric air flow rates in laboratories, medical and industrial environments.

Measuring range:	+ - 500 slm
Relative accuracy:	+ - 3%
Flow resistance:	Low
Connector:	JST/USB
Display:	JST-No/USB-Yes
Operating voltage:	5VDC
Communication:	UART
Manufacture:	Additive manufacturing technology
Calibration:	Individually calibrated
Colors:	Tube (White/Grey), Cover (Turquoise/Oil blue/Orange/Grey)

VT-500 VENTILATOR TESTER

Flow meter:	+ - 500 slm (max. overpressure: 20 kPa; accuracy: 3% or 0.5 slm)
High pressure sensor:	0 - 10 bar (accuracy: 0.1 bar)
Differential pressure sensor:	+ - 10 kPa (accuracy: 10 Pa)
Internal absolute pressure sensor:	8 - 120 kPa
Internal humidity meter:	0 - 100 %
Oxygen concentration sensor:	0 - 100%, replaceable
Communication:	Wifi
Connection:	USB connector
Manufacturing:	3D printed product

